

# **Installation Guide**

---

**PontiEC4 Version 3.2 : Issue 1**

LUSAS

Forge House, 66 High Street, Kingston upon Thames,  
Surrey, KT1 1HN, United Kingdom

Tel: +44 (0)20 8541 1999

Fax +44 (0)20 8549 9399

Email: [info@lusas.com](mailto:info@lusas.com)

<http://www.lusas.com>

Distributors Worldwide

Copyright ©1982-2018 LUSAS  
All Rights Reserved.

# Table of Contents

- PontiEC4 Installation Guide 1
- Software Supply and Licensing ..... 1
- Installing PontiEC4 ..... 1
- Adding a License Code to use PontiEC4..... 2
- Installing a Standalone USB key licence..... 3
- Installing a Network (Floating) Licence..... 3
- Using Existing Network Licence Details ..... 4
- Network (Floating) licence installation error messages..... 5
- Potential Installation and Running Errors..... 5
- Additional Potentially Useful Information..... 5



# PontiEC4

# Installation Guide

## Software Supply and Licensing

PontiEC4 software for use with LUSAS is available from the software download area of the LUSAS website.

Access to PontiEC4 within your organisation is controlled by a licence code supplied by the LUSAS licensing department. The following licensing methods are available:

- ❑ **Network (or floating) licensing** controlled by Sentinel license server software. Licences are locked to a USB Key that can be moved between license servers. The LUSAS license server needs to have access to a USB port.
- ❑ **Standalone USB Key licensing** controlled by a device called a USB Key that is inserted into a USB port on the computer.

## Installing PontiEC4

It is mandatory on all operating systems that a user with FULL administration rights is needed to carry out the installation and licensing procedures described.

Please **DO NOT** insert any license protection devices (such as a USB Key) until instructed to do so.

1. Exit any applications you are running, then depending upon your chosen installation method either:
2. Double-click the downloaded self-extracting PontiEC4 executable and unzip the required files
3. On the Installation dialog specify a folder in which to install the PontiEC4 software and click **Next**
4. Click **Next** to install the software, and click **Close** when installed.

### Adding a License Code to use PontiEC4

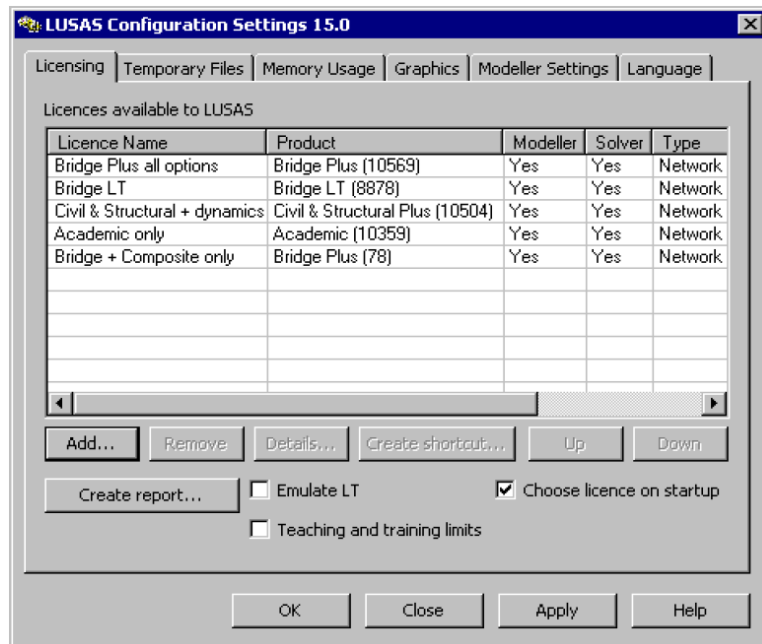
Once PontiEC4 is successfully installed, a licence code needs to be added by using the LUSAS Configuration Utility. This should be done for the highest installed version of LUSAS that is on the computer on which PontiEC4 has been installed.

- **Run the LUSAS Configuration Utility** that was installed as part of your LUSAS installation. Running this configuration utility differs according to the operating system in use. If necessary refer to the LUSAS Installation Guide for details.

The LUSAS Configuration Utility consists of a number of tabbed pages that are used to control the following:

- Licensing information for the computer
- Temporary file locations
- Memory usage settings for LUSAS Modeller and LUSAS Solver
- Whether hardware or software drivers are to be used to draw graphics
- Modeller settings (resetting of defaults and specifying locations of results files)
- Language settings to be used for the user interface.

**For PontiEC4, only the Licensing page of the configuration utility needs to be accessed.**



- A PontiEC4 licence may be added to the list of those other licences available by clicking on the **Add...** button on the Licensing dialog of the LUSAS Configuration Utility.

## Installing a Standalone USB key licence

- On the Add Licence Wizard page choose **Standalone licence**, click **Next** and enter the location of the licence code file that you will have been supplied with and, if you wish, a name to identify the licence. Finally, click **Finish** to add the licence.
- **Note that due to an installation software issue, when a PontiEC4 licence file is added using the Configuration utility it may not get displayed in the list of licences shown on the dialog, and an entry may not appear in the FEA.key file in your LUSAS installation, but the license will have been added correctly.**
- The new licence is not available for use until you press **Apply** on the Licensing page of the LUSAS Configuration Utility.

This procedure will add the PontiEC4 licence to your installation. You may now insert your USB key.



### Notes.

- In the unlikely event of installing a standalone PontiEC4 licence without a Standalone Modeller licence specified in your key file, you will need to manually add the following line to the FEA.key file in your LUSAS installation [SENTINELLM, STANDALONE]

## Installing a Network (Floating) Licence

- On the Add Licence Wizard page press the **Add...** button and from the resulting dialog select **New network licence from a license code file**. On pressing **Next** there will be a pause whilst LUSAS scans your network for servers.

### If suitable servers are found

Any licence server computers that are subsequently shown are suitable for use. Choose one, insert the USB Key into the chosen licence server and then enter the location of the licence code file that you have been given. Note that the licence server computer might or might not be the same machine as the client computer on which PontiEC4 or LUSAS is installed.

The option **Make this licence available to LUSAS on this (local) machine** adds the licence to the server and makes the licence available to the PC from which LUSAS is run.

### **If no suitable servers are found**

If no suitable servers were found, it will be necessary to install the Sentinel license server. Additionally, you may choose to designate a machine as a new LUSAS license server, even if an existing machine is suitable.

### **If out of date servers are found**

The name of any server that has been installed with a lower version than that required will be reported. These server computers are suitable for use but only after their Sentinel software has been upgraded. To do this, please follow the instructions for installing the Sentinel software on the license server computer. See the *LUSAS Installation Guide* for more details.



### **Notes.**

- **Note that due to an installation software issue, when a PontiEC4 licence file is added using the Configuration utility it may not get displayed currently in the list of licences shown on the dialog, but the license is added correctly.**
- If you have a PontiEC4 licence on a server and if you have a network licence specified first in your key file then PontiEC4 will use the network licence just like LUSAS Modeller or LUSAS Solver would.
- If you are installing a Network licence and you do not have a Network Modeller licence on the same server specified in your key file then you will need to manually add the following line (replacing yourServerName with the name of your server) to the FEA.key file in your LUSAS installation [SENTINELLM, yourServerName]

## **Using Existing Network Licence Details**

If you already have a LUSAS Modeller / Solver network licence listed in the Licensing dialog of the LUSAS Configuration Utility, that is on the same server as the PontiEC4 licence that you want to use, then no further actions are required. PontiEC4 will search for licences on the servers that are listed.

- If you don't have a LUSAS Modeller / Solver network licence listed in the Licensing dialog of the LUSAS Configuration Utility, that is on the same server as the PontiEC4 licence you want to use, then you will need to manually add the following line (replacing yourServerName with the name of



your server) to the FEA.key file in your LUSAS 15.x installation [SENTINELLM, yourServerName]

## Network (Floating) licence installation error messages

If you are experiencing problems with installing or using the network license, full explanations of messages and fixes are given on the LUSAS website [http://www.lusas.com/support/error/sentinellm\\_errors.html](http://www.lusas.com/support/error/sentinellm_errors.html).

## Running PontiEC4

On start-up, PontiEC4 looks for the highest installed version of LUSAS that is on the computer on which it is being installed and then checks for a valid licence key for PontiEC4 within this LUSAS version. As a result, when new versions of LUSAS are installed, if PontiEC4 is to be used with the latest and any lower installed versions of LUSAS the PontiEC4 licence key should be re-installed using the LUSAS Configuration Utility of the highest installed version of LUSAS.

## Potential Installation and Running Errors

If you experience problems during or after a valid PontiEC4 licence installation please contact LUSAS Technical Support, [\[support@lusas.com\]](mailto:support@lusas.com) stating the licencing option that you are using, along with any other error messages you are obtaining.

An explanation of the common errors that may be encountered can be found at [http://www.lusas.com/support/licence\\_key.html](http://www.lusas.com/support/licence_key.html)

## Additional Potentially Useful Information

See the *LUSAS Installation Guide*.

